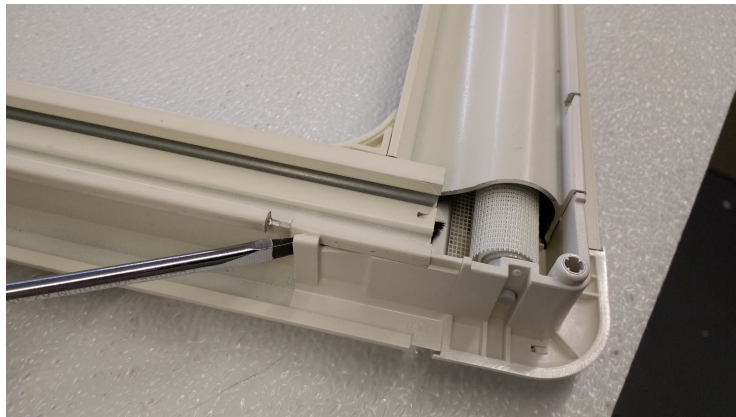


# Changing RSS Handle Post 2012



Put Flathead Screwdriver into corner notch and push firmly releasing corner from siderail. Pull apart. A video to take corners off and put back on can be found here:

<https://www.youtube.com/watch?v=CugMaGr1VG4&feature=youtu.be>



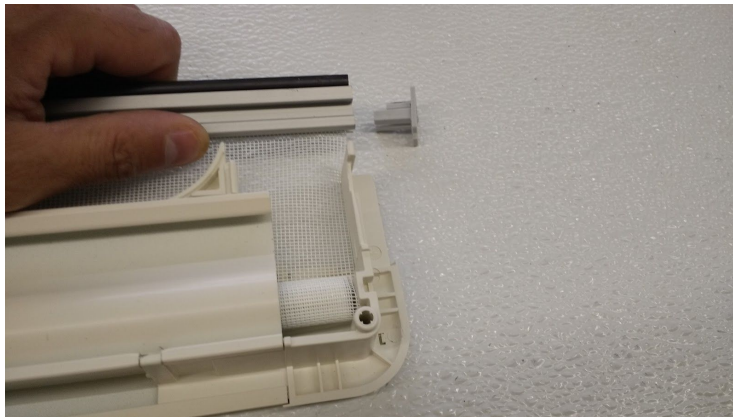
Do the same thing to the other side



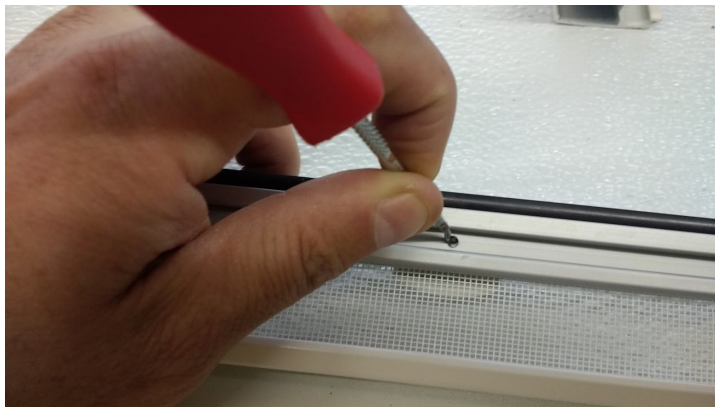
You have separated the cassette



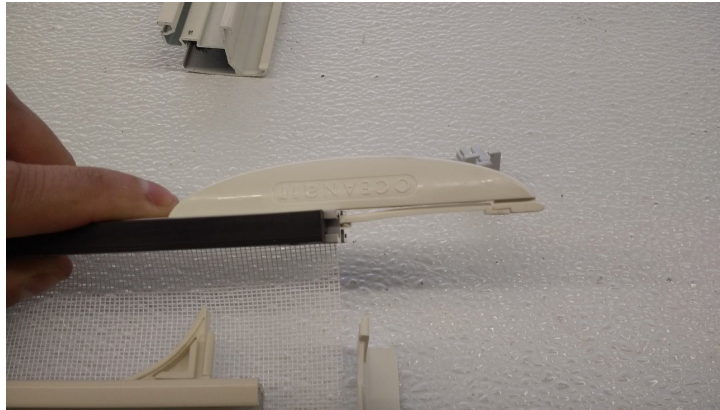
Pull off Xbar endcap



Behind handle use something pointy to push in and over to release the handle from xbar



Slide off handle. BE AWARE WHAT WAY HANDLE IS FACING.



Slide new handle the exact way you took it off old one through notch in xbar. When it hits the nib push in and slide the rest of the way



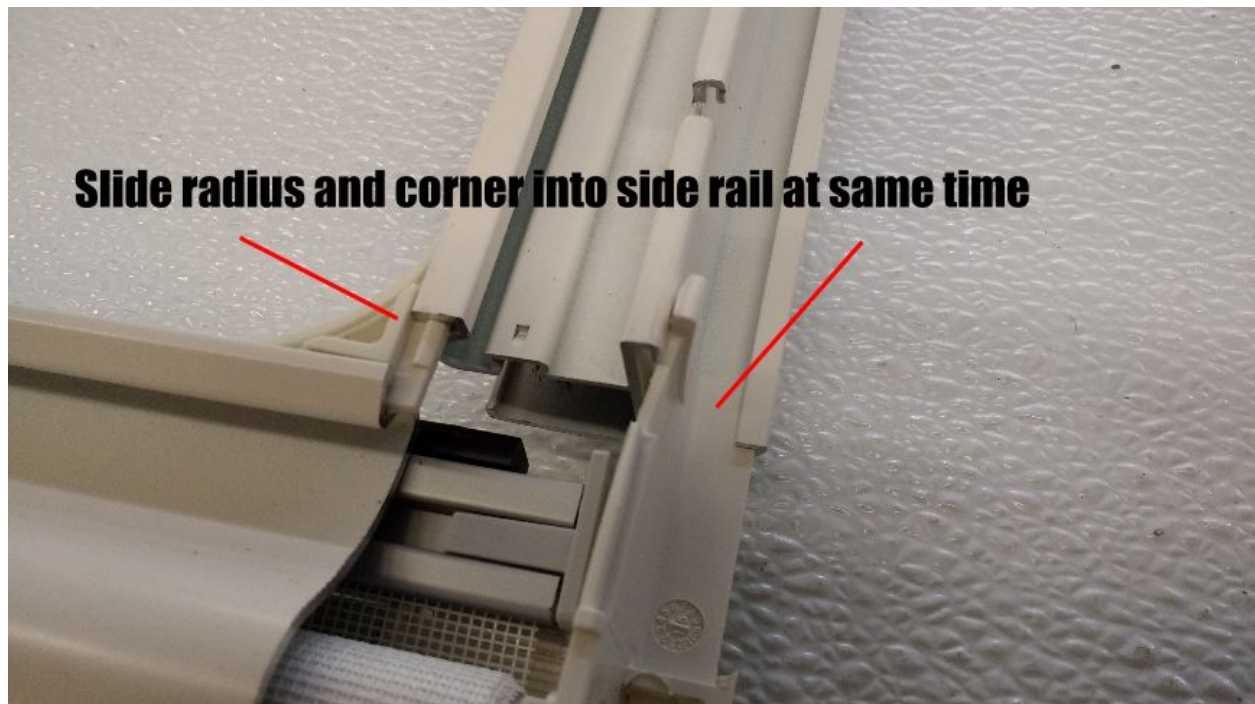
Slide handle until the nib click into hole in xbar



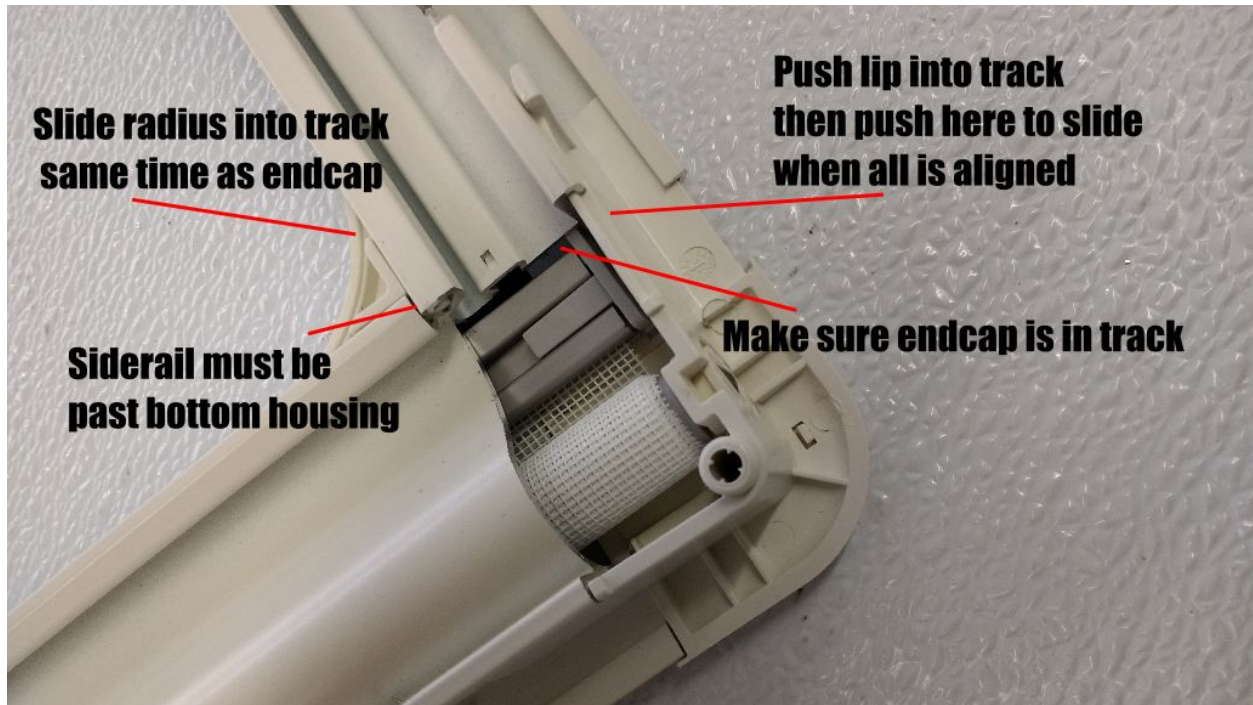
Put Xbar endcap back on



You are ready to put the blind back together. When sliding corner into siderail make sure the radius slides into notch. It is easiest to do this first to both ends before pushing below the notch to click it in place



The corner will not slide if siderail is not past bottom housing. Make sure the endcap of X-bar is in track. You can the press below the notch to allow corner to slide on. Keep finger away from notch to not pinch your finger. Do this to both ends making sure the notch click into siderail.



To finish, pull both shade and screen to make sure it glides properly through track. Put on liner if needed.