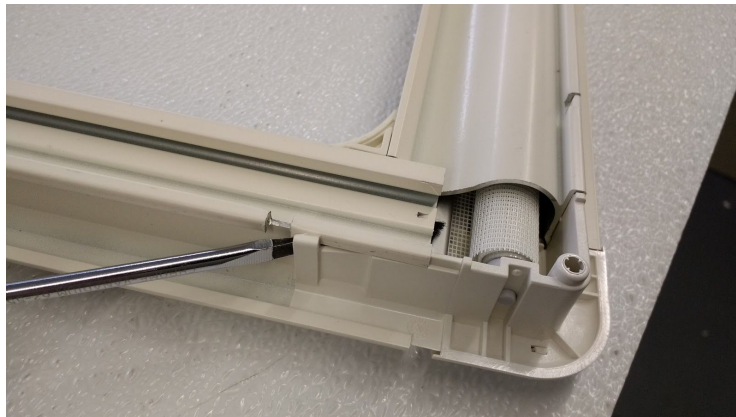


Changing RSS Handle Pre 2012



Put Flathead Screwdriver into corner notch and push firmly releasing corner from siderail. Pull apart. A video to take corners off and put back on can be found here:

<https://www.youtube.com/watch?v=CugMaGr1VG4&feature=youtu.be>



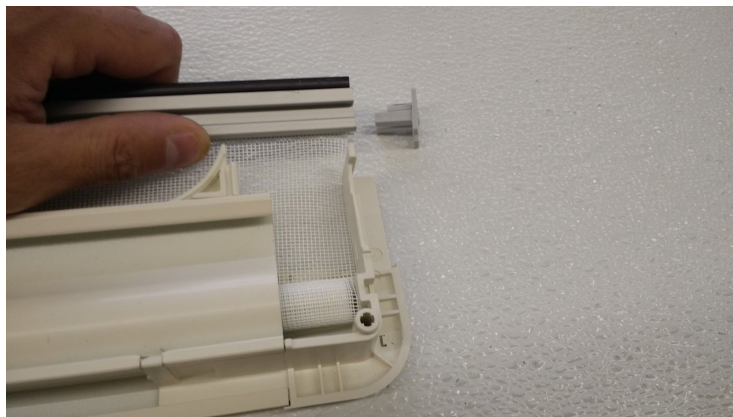
Do the same thing to the other side



You have separated the cassette

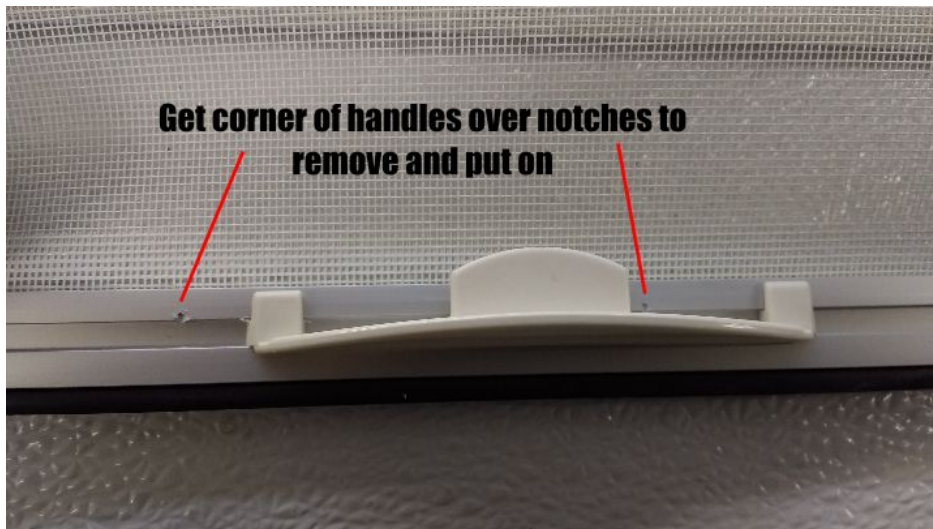


Pull off Xbar endcap



Use a soft tip hammer to not scratch. Hit handle where it meets crossbar to knock it over notches





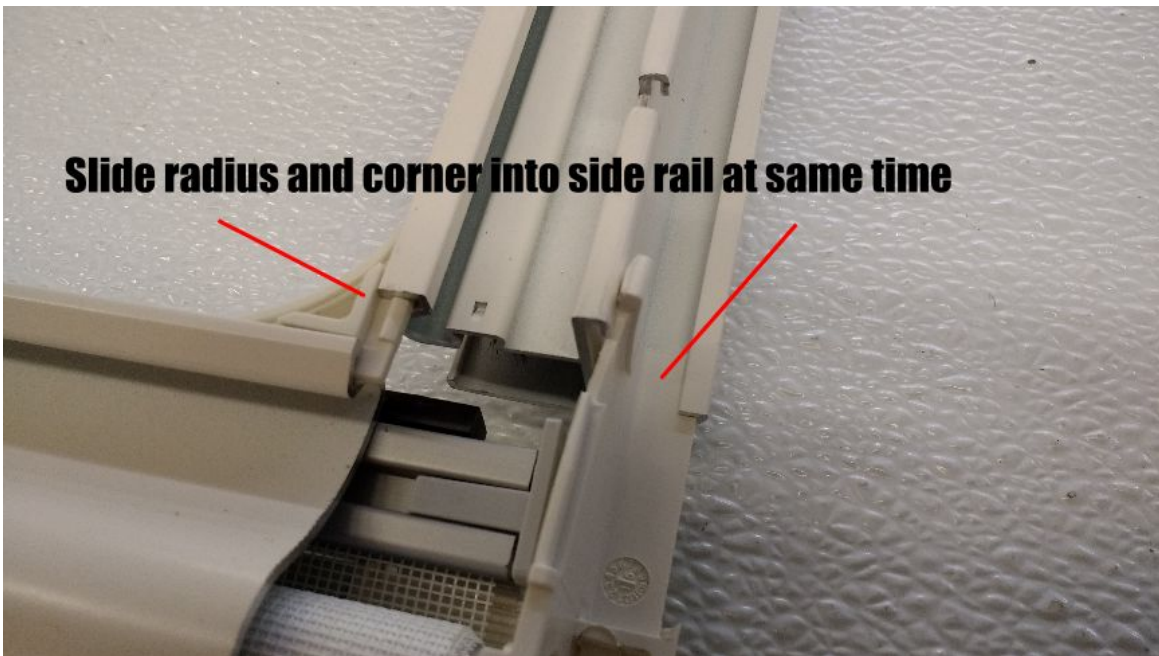
Slide off handle. BE AWARE WHAT WAY HANDLE IS FACING.

Slide new handle the exact way you took off old one through notch in crossbar. Use soft tip hammer to bump handle over notches in crossbar

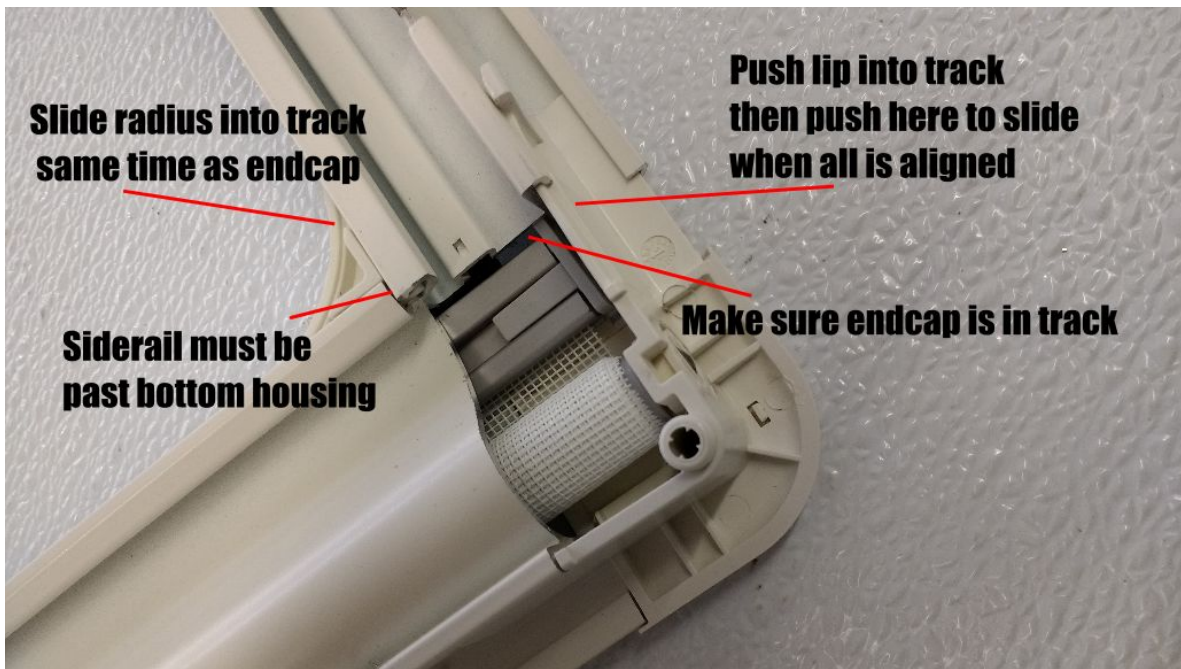
Put crossbar endcap back on



You are ready to put the blind back together. Make sure blind/screen is rolled tightly. When sliding corner into siderail make sure the radius slides into notch. It is easiest to do this first to both ends before pushing below the notch to click it in place



The corner will not slide if siderail is not past bottom housing. Make sure the endcap of X-bar is in track. You can the press below the notch to allow corner to slide on. Keep finger away from notch to not pinch your finger. Do this to both ends making sure the notch click into siderail.



To finish, pull both shade and screen to make sure it glides properly through track. Put on liner if needed.