

Changing SFSS Handle Pre 2012



Turn blind over and unscrew siderail from end cassette



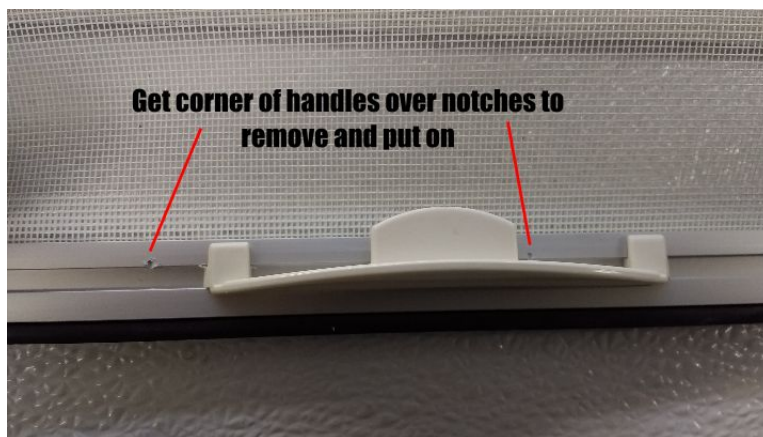
Do the same thing to the other side and separate end cassette



Pull off Xbar endcap



Use a soft tip hammer to not scratch. Hit handle where it meets crossbar to knock it over notches



Slide off handle. BE AWARE WHAT WAY HANDLE IS FACING. Slide new handle the exact way you took off old one through notch in crossbar. Use soft tip hammer to bump handle over notches in crossbar
Put crossbar endcap back on



You are ready to put the blind back together..



Put siderails back into corners and tighten screws



Snap the radius back into siderail and end cassette slit . Put on liner if needed.